

Blairderry Road, Streatham Hill, SW2

1 bedroom flat - purpose built for sale

£350,000

Leasehold

Property Details

A bright and spacious one double bedroom apartment on the second floor of a modern building, finished in a neutral and contemporary style. The home benefits from high energy efficiency, helping to reduce bills, and is ready to move into with the potential to add your personal touches. The open-plan reception and kitchen stretches over nine meters, flooded with natural light from floor-to-ceiling windows, creating a generous and sociable living space. The kitchen features a practical horseshoe layout with cream cabinetry, contrasting dark worktops, and integrated appliances, with a window for ventilation while cooking. The double bedroom is well-proportioned, with built-in wardrobes, soft carpeting, and space for a King-sized bed, additional storage, and a desk or dressing table. The bathroom is fully tiled, fitted with a modern white suite, a bathtub with overhead shower, and a large mirror. A large hallway cupboard provides extra storage. Conveniently, M&S Foodhall and Gail's Bakery are just around the corner, making everyday shopping effortless.

Features

- One large double bedroom
- Secure modern build
- Over 600 square feet
- Bright and airy
- Neutrally presented throughout
- Amenities of Streatham's vibrant high street on the doorstep
- Streatham Hill station a four-minute walk
- Tooting Bec common within strolling distance

Council tax band C

EPC rating B (84)

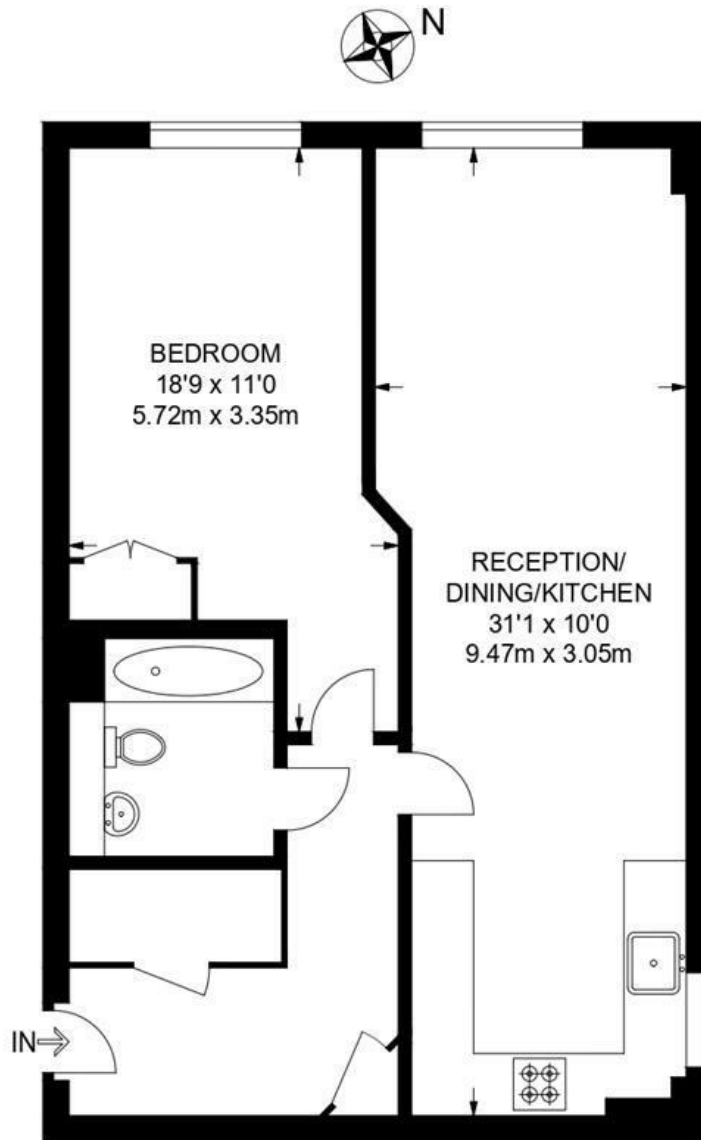


Blairderry Road, Streatham Hill, SW2

Blairderry Road, SW2

1 Bedroom Flat

APPROXIMATE GROSS INTERNAL AREA: **616 SQ FT / 57.2 SQ M**



SECOND FLOOR



While we try our very best, floor plans are produced as a guide only and we take no responsibility for the precise accuracy with which any property is represented.

Blairderry Road, Streatham Hill, SW2

